

實驗十六

Linux路由 器：建構、測試與追蹤

教師：

助教：

2000/05/31

High Speed Network Lab.

Department of Computer Information Science, NCTU

Outline

- Linux kernel debug–KDB
- kernel boot up
- root file system
- software we need
- build Linux router
- benchmark

Linux kernel debug–KDB

- patch Linux Kernel
 - download a patch match your kernel version
 - check it out
 - patch your kernel
- trace kernel flow
 - bp:set break point
 - ss:Single Step
 - bt: Stack Traceback

Linux boot up

- Load the kernel
- Probe & setup the hardware
- Create system process
- System initialization
- getty
- login process

root file system

/dev	Devices, required to perform I/O
/proc	Directory stub required by the proc filesystem
/etc	System configuration files
/sbin	Critical system binaries
/bin	Basic binaries considered part of the system
/lib	Shared libraries to provide run-time support
/mnt	A mount point for maintenance on other disks
/usr	Additional utilities and applications

package

- binary executable file(s) put into /bin 、 /sbin 、 /usr/bin or /usr/sbin
- configuration file(s) put into /etc
 - package
 - control
- additional shared libraries put into /lib
 - check it by ldd, prints the shared libraries required
 - can be omitted by static link compiled
- log file and/or manual if you need it

RAM disk

- need to config kernel to support it
- benefit
 - faster
 - reduce capacity with compressed image
- Linux kernel support
 - automatically copy the contents of a root file system to a ramdisk, and then switch the root drive to be the ramdisk
 - bad feature: assume you are using floppy disk
- something similar
 - kernel initrd feature

software we need

- kernel
 - support NIC 、routing functionality 、ramdisk 、ext2 and something else you like it
- utilities and scripts are in need of boot up
 - like /sbin/init 、/bin/mount 、/bin/login , etc
 - /etc/inittab 、/etc/fstab ,
 - system initial script , /etc/rc
- network utilities
 - /sbin/route 、/sbin/ifconfig
 - config script(s) which is invoked by system initial script to setup up NIC(s) and routing
- routing daemon
 - routed or gated

build Linux router

- top-down
 - step by step remove what you don't need
 - remove redundant package. `rpm -e XXX`
- bottom-up
 - customize it by systematic script
 - Yard written by perl

Yard

- written by Tom Fawcett(writer of The Linux Bootdisk HOWTO 3.5 July 1999)
- exploits the compressed ramdisk feature of kernel
- You can specify the set of files you want
- check library, symbolic link
- with or without lilo

Yard(cont.)

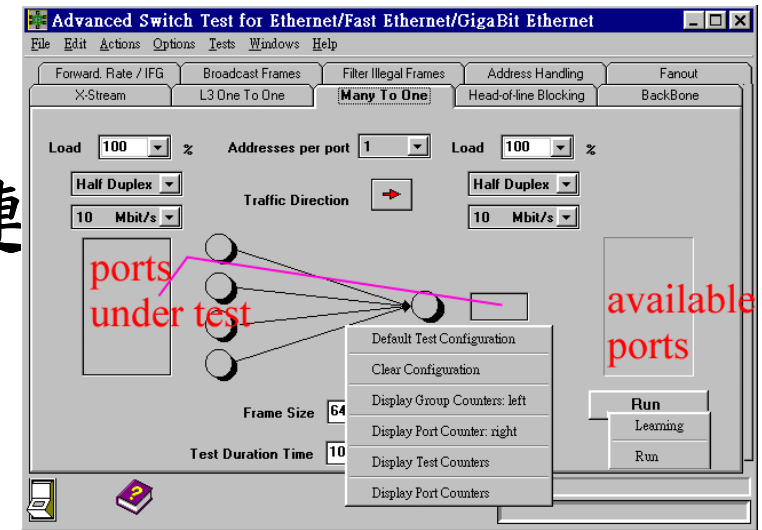
- Config.pl
 - device
 - lilo?
 - one or two floppy
 - kernel
 - strip?
- Bootdisk_contents
 - Specifies what your bootdisk will contain

Yard(cont.)

- `make_root_fs`—Constructs an initial, uncompressed root filesystem
 - Reading `/etc/yard/Bootdisk_Contents`
 - Picking up extra files from links
 - Checking library dependencies
 - Recording hard links
- `check_root_fs`—checks the root filesystem for errors and omissions
 - `inittab`, `fstab`, `passwd`, `pam.conf`
 - scripts for missing interpreters, missing files, etc
 - checks configuration of PAM and NSS
- `write_rescue_disk`—takes your kernel and the (compressed) root filesystem and produces a rescue disk from it
 - If you've selected the `disk_set=DOUBLE` option, the program will write the kernel onto the first disk, then prompt you to change disks, after which it will write the root disk.

benchmark

- 設定AST與SmartBits的連
- 啟動SmartBits與AST
- 連接SmartBits與待測物
- 使用AST測試套件依不同項目個別測試
 - 設定測試埠連結
 - 參數設定:
 - 執行測試及結果收集、統計



reference

- [1]Netcom systems, “<http://www.netcomsystems.com>”.
- [2]Red Hat, <http://www.redhat.com>
- [3]linux.cis.nctu.edu.tw, NFS 、FTP方式的安裝。
- [4]Yard,” <http://www.croftj.net/~fawcett/yard/>”
- [5]Kdb, <http://oss.sgi.com/projects/kdb/>
- [6]Tom Fawcett, “The Linux Bookdisk HOWTO”, LDP, January 2000
- [7]Dave Bennett, “Booting Linux from EPROM”, Linux Journal, January 1997
- [8]Paul Moody, “miniHOWTO Embedded Linux 1.1c”, May 1998
- [9]Walter Harms, “mini-howto alpha version 0.2”, April 1999
- [10]Gerard Beekmans, “Linux From Scratch”, April 2000

reference(cont.)

- [11]dcinege@psychosis, “Booting Linux with higher density floppy disks”, Jun 1998
- [12]Paul Gortmaker, ”Using the RAM disk block device with Linux”, December 1995
- [13]Alessandro Rubini, "Linux Device Drivers", O'Reilly & Associations, Feb 1998.
- [14]Werner Almesberger, “LILO Generic boot loader for Linux Version 21 User's Guide”, December 1998.
- [15]Cameron Spitzer, “Lilo mini-Howto”, LDP, August, 1998
- [16]Tom Fawcett, “Yard Document”, November 1998